

3x6m Zoom Tent Canopy

ZT36-XAF

A: total area including bleed:
3002mm (w) x 2202mm (h) per Side
Finished size:
2920mm (w) x 2092mm (h) per Side

B: total area including bleed:
5928 (w) x 2172 (h) mm per Side
Finished size:
5844mm (w) x 2092mm (h) per Side

**4 Artwork sides are required
for 1 Tent Canopy**

Please keep all text, logos and critical design elements to the inside of the safe area indicated by the green keyline.

Note LOOP will be sewn to the inside of the Canopy along the top and bottom of the Valance area to help the fitment and attachment of full walls if required indicated by the Grey Bars

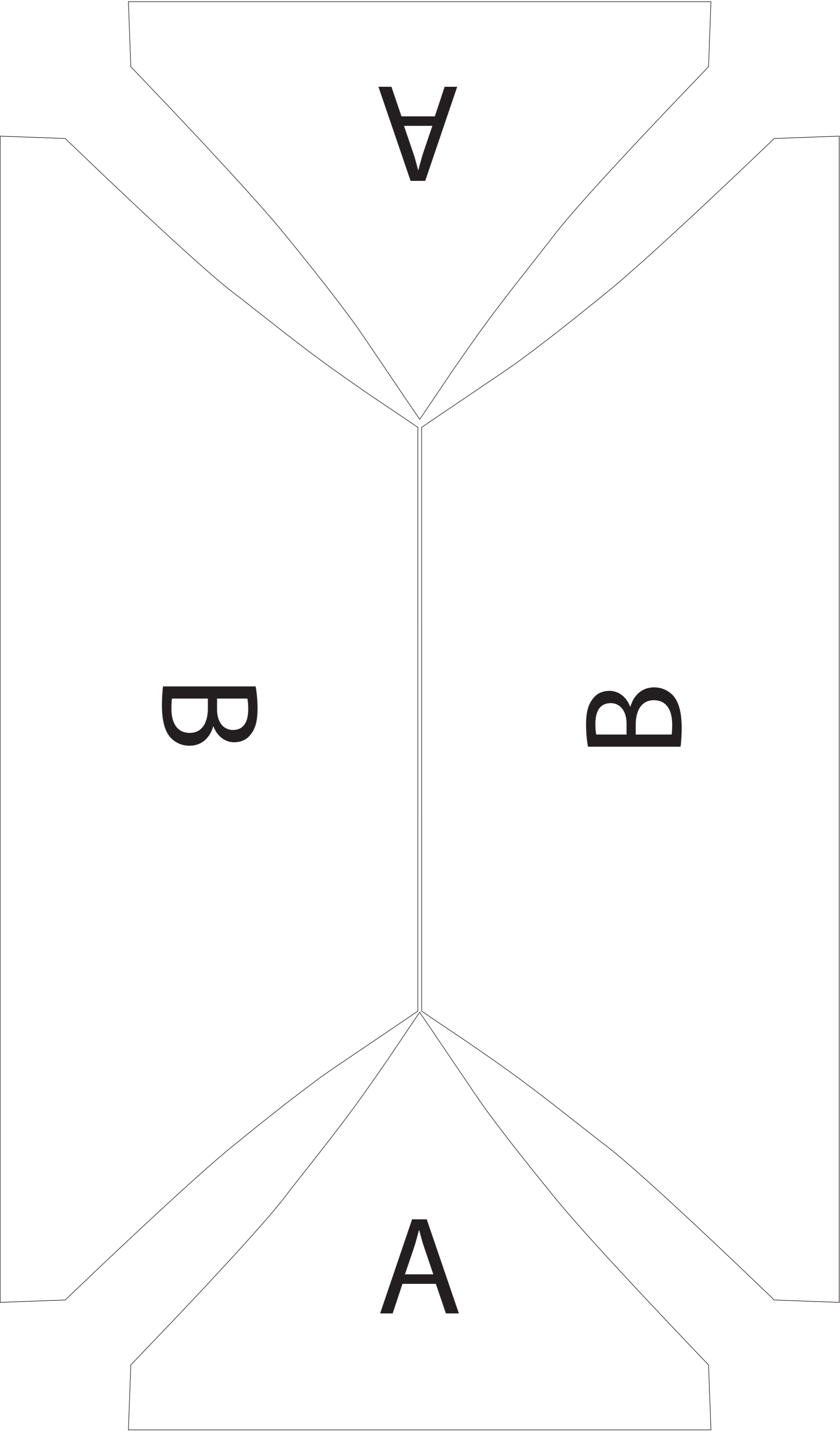
Please note this template is created for our own fabric characteristics and may need to be adjusted to suit other fabrics.

General guidelines

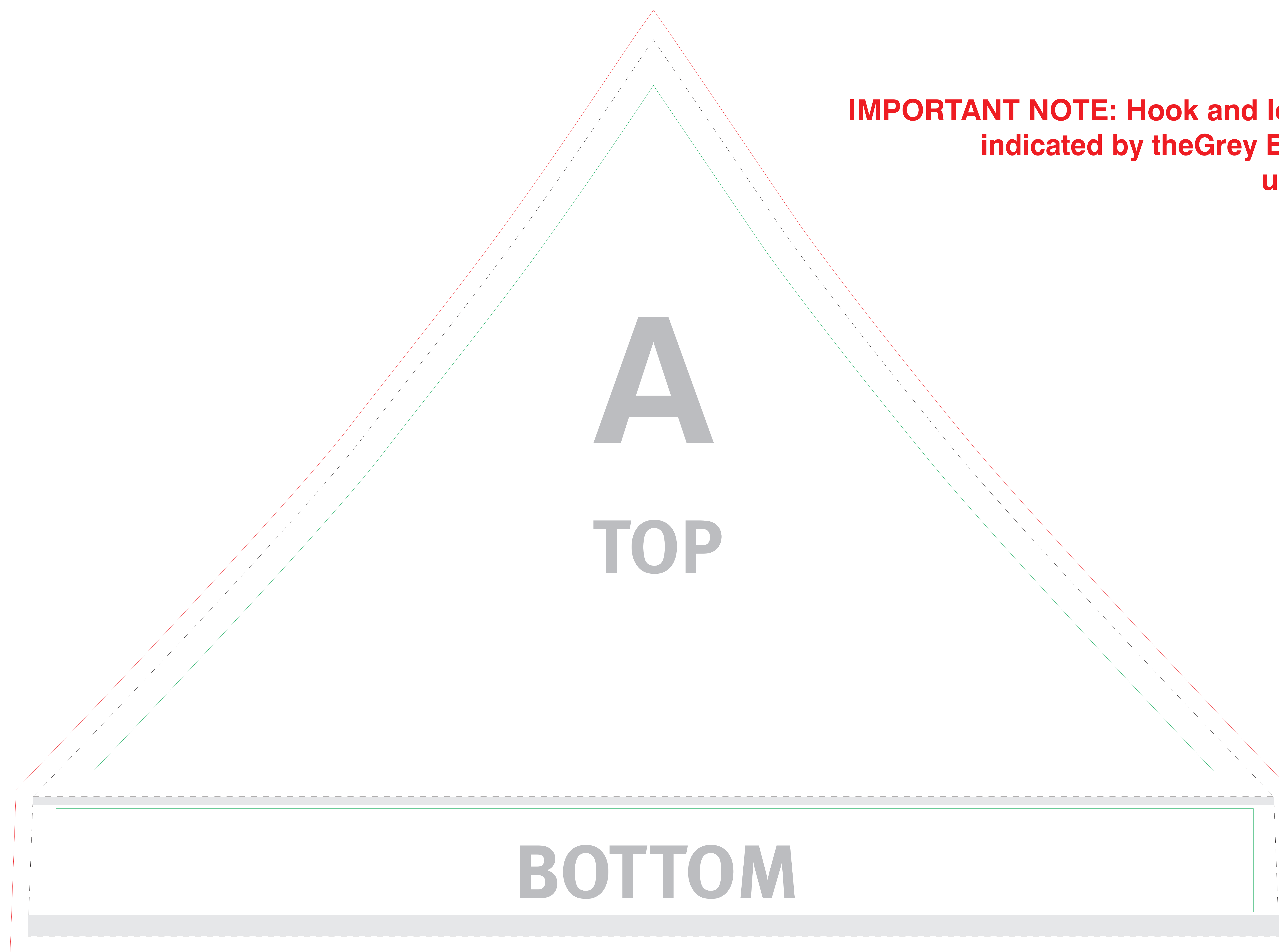
- CMYK
- Convert Pantone colours to CMYK.
- Do not supply RGB images.
- Do not embed images, supply them.
- Resolution must be 300 dpi at 25% of output size.
- All fonts must be converted to outlines.
- Please supply artwork as PDF or Illustrator EPS files.

This template

- Is supplied at 25% of finished size.
- Includes 10mm bleed (as shown by the red keyline).
- Overall template size:
A: 750.5 (w) x 550.5 (h) mm
B: 1482 (w) x 543 (h) mm



Graphic will be finished as seen above. Edges will be hemmed together to form tent graphic.



IMPORTANT NOTE: Hook and loop fastener is required to attach a full wall to the tent canopy indicated by the Grey Bars. Loop fastener will not be sewn onto the canopy unless a full wall is also ordered.

